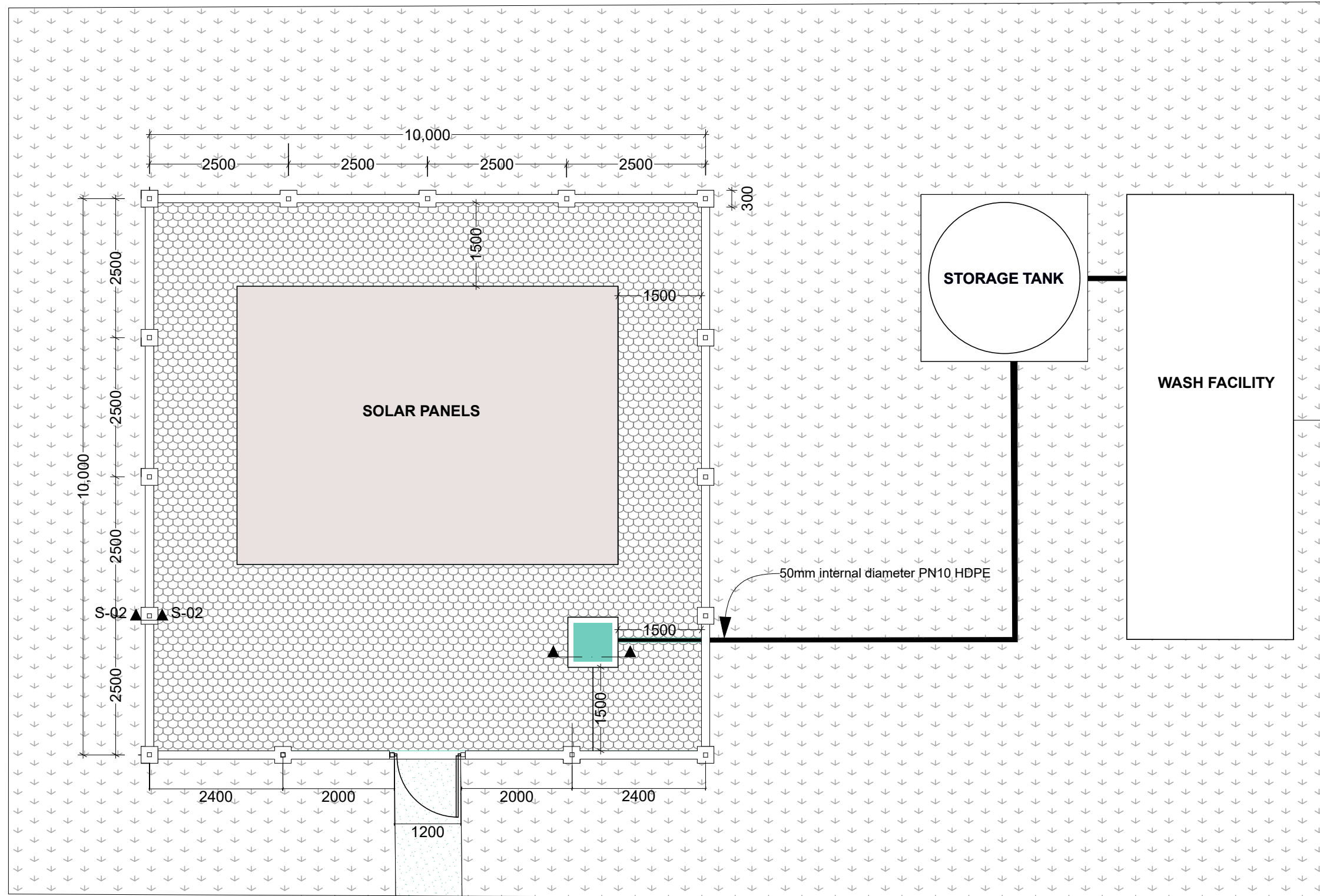


# WEZESHA BINTI PROJECT:

ACCESS TO WATER FOR WASH FACILITIES AND DORMITORIES.

E N G I N E E R I N G   D R A W I N G S

---



0.

FLOOR PLAN

1:80



WEZESHA BINTI PROJECT  
ACCESS TO WATER FOR WASH  
FACILITIES AND DORMITORIES

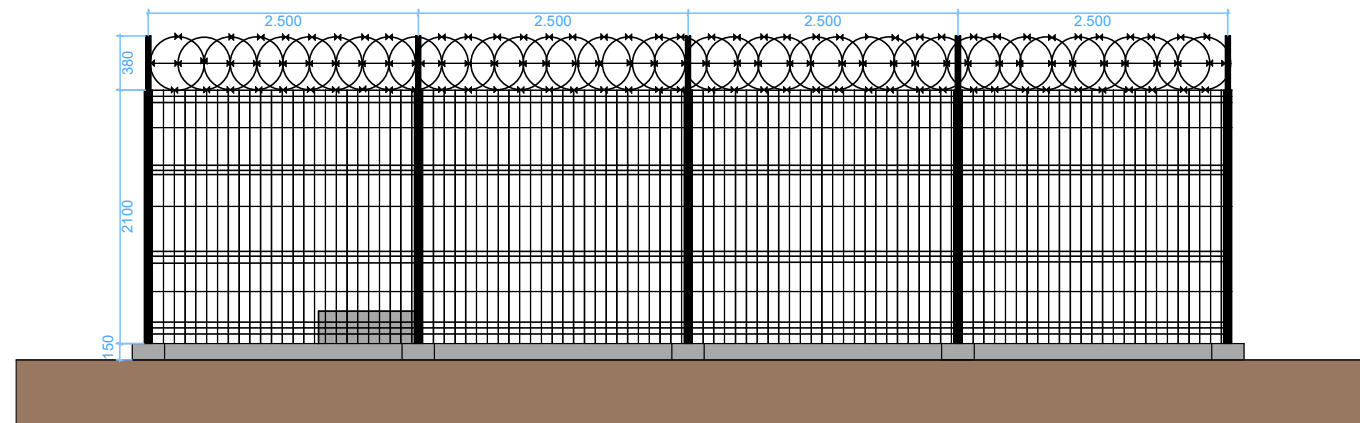


Kigoma MC	Client	REGIONAL COMMISSIONER'S OFFICE - KIGOMA
Kigoma DC		
Kasulu TC	Supervisor	District Engineers and Enabel
Kasulu DC		
Kibondo DC	Donor	WEZESHA BINTI ENABEL Belgian Agency of international cooperation P.O. Box 24 Kigoma, Tanzania

GENERAL NOTES :
1. All dimensions are in mm
2. Depth of foundation may change due to subsoil condition
3. Scale: 1:80

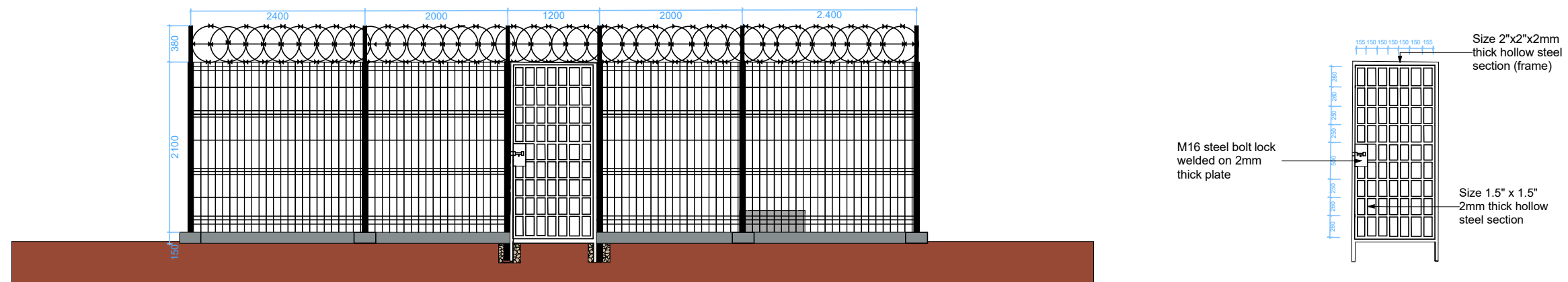
BUILDING TYPE : BOREHOLE FENCE, SOLAR MOUNTING STRUCTURE AND CHAMBER

Drawing Title	BOREHOLE FENCE LAYOUT PLAN
Date	May , 2026
Scale	1:80
Design by	ENABEL



North Elevation

1:70



South Elevation

1:70



WEZESHA BINTI PROJECT  
ACCESS TO WATER FOR WASH  
FACILITIES AND DORMITORIES



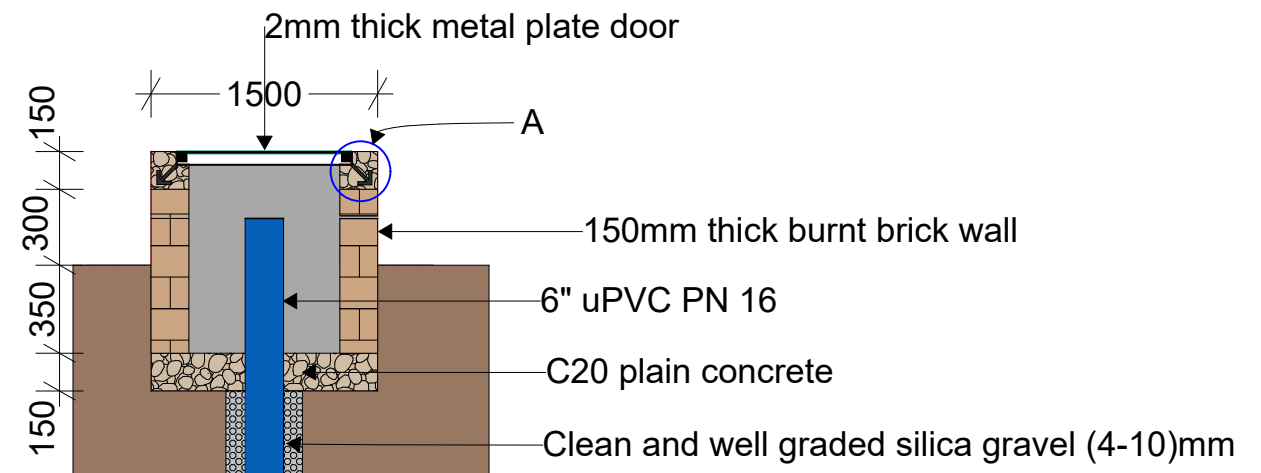
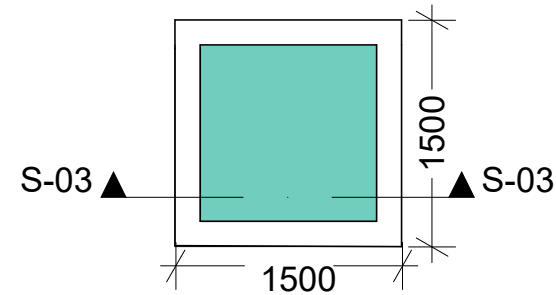
Kigoma MC	Client	REGIONAL COMMISSIONER'S OFFICE - KIGOMA
Kigoma DC		
Kasulu TC	Supervisor	District Engineers and Enabel
Kasulu DC		
Kibondo DC	Donor	WEZESHA BINTI ENABEL Belgian Agency of international cooperation P.O. Box 24 Kigoma, Tanzania

GENERAL NOTES :

1. All dimensions are in mm
2. Depth of foundation may change due to subsoil condition
3. Scale : 1:70

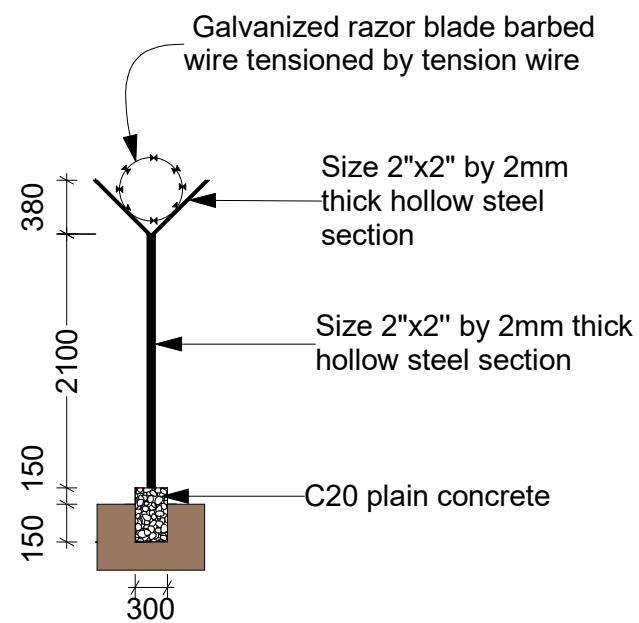
BUILDING TYPE : BOREHOLE FENCE, SOLAR MOUNTING STRUCTURE AND CHAMBER

Drawing Title	FENCE ELEVATIONS
Date	May , 2026
Scale	1:70
Design by	ENABEL



Borehole Inspection chamber

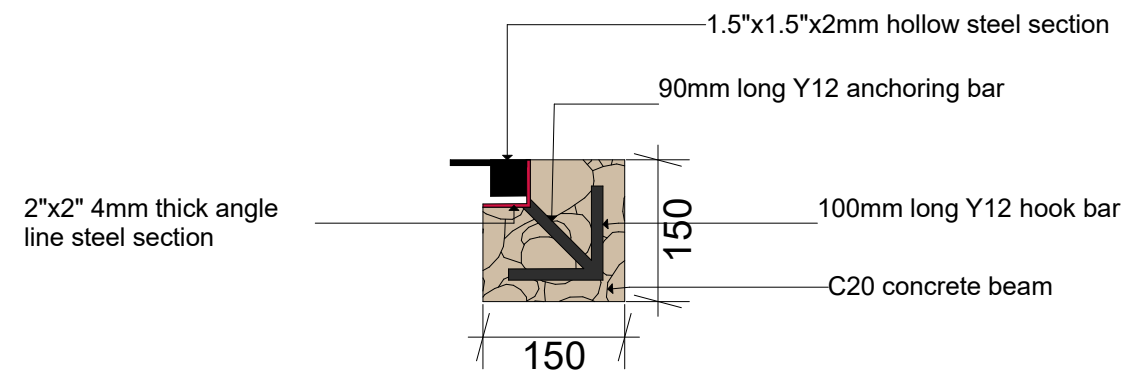
1:30



S-02

Fence section

1:70



Detail A

1:8



WEZESHA BINTI PROJECT  
ACCESS TO WATER FOR WASH  
FACILITIES AND DORMITORIES



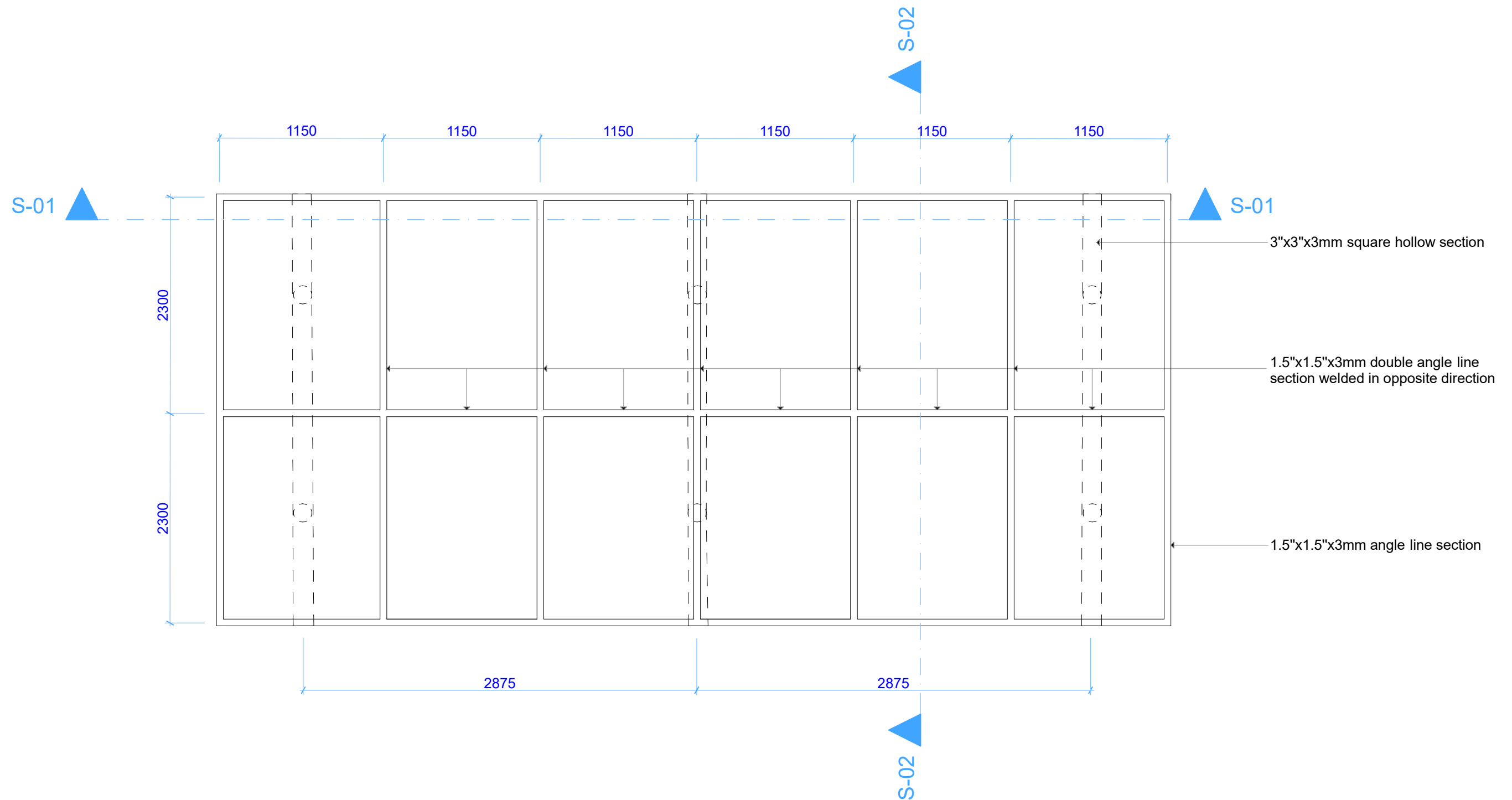
Kigoma MC	Client	REGIONAL COMMISSIONER'S OFFICE - KIGOMA
Kigoma DC		
Kasulu TC	Supervisor	District Engineers and Enabel
Kasulu DC		
Kibondo DC	Donor	WEZESHA BINTI ENABEL Belgian Agency of international cooperation P.O. Box 24 Kigoma, Tanzania

GENERAL NOTES :

1. All dimensions are in mm
2. Depth of foundation may change due to subsoil condition
3. Scale : Not to scale

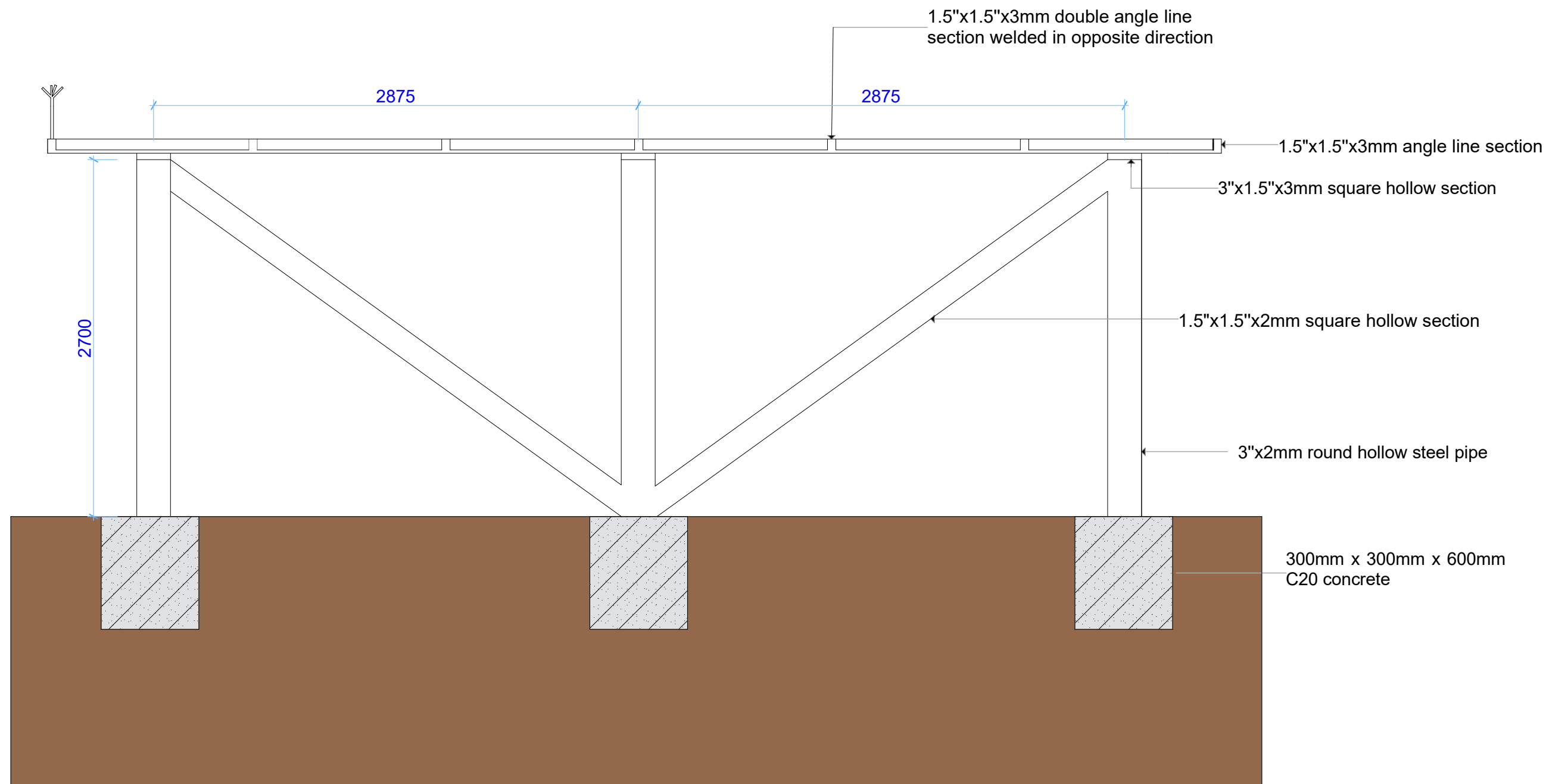
BUILDING TYPE : BOREHOLE FENCE, SOLAR MOUNTING STRUCTURE AND CHAMBER

Drawing Title	CHAMBER AND FENCE SECTION
Date	May , 2026
Scale	NTS
Design by	ENABEL



Kigoma MC	Client	REGIONAL COMMISSIONER'S OFFICE - KIGOMA
Kigoma DC		
Kasulu TC	Supervisor	District Engineers and Enabel
Kasulu DC		
Kibondo DC	Donor	WEZESHA BINTI ENABEL Belgian Agency of international cooperation P.O. Box 24 Kigoma, Tanzania

<b>GENERAL NOTES :</b> 1. All dimensions are in mm 2. Dimensions can change depending on number and type of solar panel 3. Depth of foundation may change due to subsoil condition 4. Scale : 1:80		Drawing Title	SOLAR PANEL LAYOUT
		Date	May , 2026
		Scale	1:80
		Design by	ENABEL
BUILDING TYPE : BOREHOLE FENCE, SOLAR MOUNTING STRUCTURE AND CHAMBER			



S-01

Section

1:70



WEZESHA BINTI PROJECT  
ACCESS TO WATER FOR WASH  
FACILITIES AND DORMITORIES



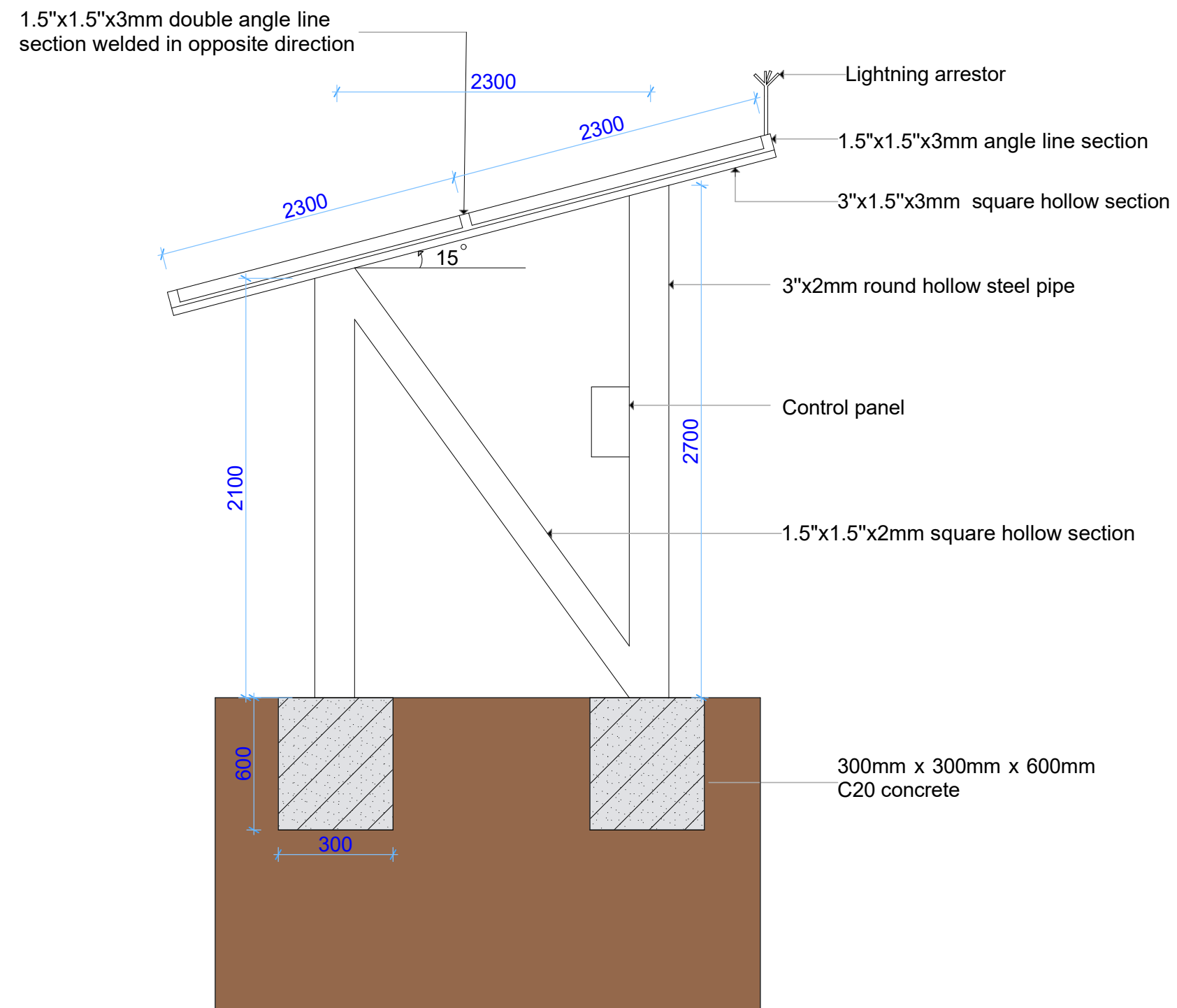
Kigoma MC	Client	REGIONAL COMMISSIONER'S OFFICE - KIGOMA
Kigoma DC		
Kasulu TC	Supervisor	District Engineers and Enabel
Kasulu DC		
Kibondo DC	Donor	WEZESHA BINTI ENABEL Belgian Agency of international cooperation P.O. Box 24 Kigoma, Tanzania

GENERAL NOTES :

1. All dimensions are in mm
2. Depth of foundation may change due to subsoil condition
3. Scale : 1:70

BUILDING TYPE: BOREHOLE FENCE, SOLAR MOUNTING STRUCTURE AND CHAMBER

Drawing Title	SECTION-01
Date	May , 2026
Scale	1:70
Design by	ENABEL



S-02

Section

1:70



WEZESHA BINTI PROJECT  
ACCESS TO WATER FOR WASH  
FACILITIES AND DORMITORIES



Kigoma MC	Client	REGIONAL COMMISSIONER'S OFFICE - KIGOMA
Kigoma DC		
Kasulu TC	Supervisor	District Engineers and Enabel
Kasulu DC		
Kibondo DC	Donor	WEZESHA BINTI ENABEL Belgian Agency of international cooperation P.O. Box 24 Kigoma, Tanzania

GENERAL NOTES :

1. All dimensions are in mm
2. Depth of foundation may change due to subsoil condition
3. Scale : 1:70

BUILDING TYPE : BOREHOLE FENCE, SOLAR MOUNTING STRUCTURE AND CHAMBER

Drawing Title SECTION-02

Date May , 2026

Scale 1:70

Design by ENABEL